

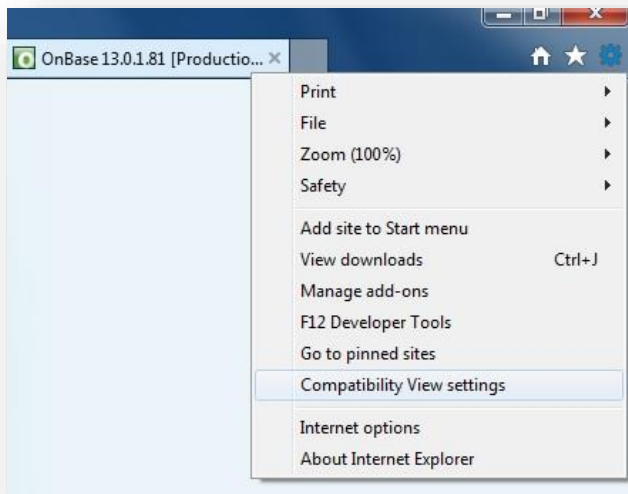
Online Forms Browser Compatibility Guide

Online forms have been tested and known to work with many browsers, including, but not limited to Internet Explorer, Chrome, Firefox and Safari. This list also includes mobile devices. Assure that Adobe Flash Plugins are installed, if you are unable to sign and submit the form, you must install the Flash Plugin.

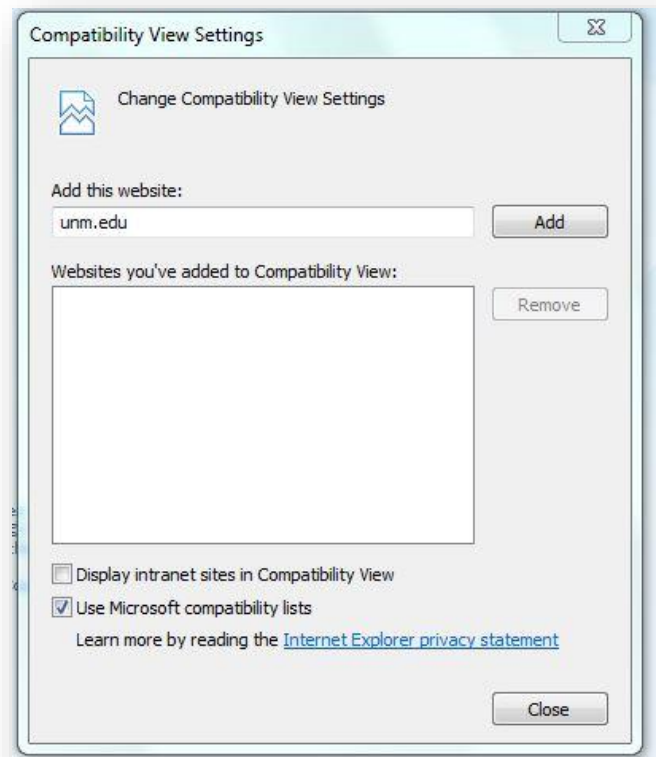
1. If you try to access an online form in Internet Explorer 11 and see the following page, then Compatibility View may be needed.



2. To enable Compatibility View in IE 11, select the small gear on the right side as seen here. Select "compatibility view settings".



3. In the Compatibility View Settings window. The website "unm.edu" should already be in the field to add, if not, type it in and select add. Then you can close. Re-access the form to verify its accessibility now.



To enable compatibility mode for Internet Explorer 8-11. Please see these links.

[IE 8](#) - [IE 9](#) - [IE 10](#) - [IE 11](#)